

# Modular Smart Display

Smart & narrow border design

**W42L100-OMA2**



## Features



- 42 inch wide view angle display
- Ultra-narrow border (18 mm) design for video wall (A2 Model)
- High brightness up to 500 cd/m2
- Full range interfaces (VGA, DVI, CVBS, S-video, Component, HDMI)
- RS232 remote control and optional Daisy-chain function
- Overheating protection with temperature controlled fans
- Smart scheduling
- Slot for optional module



Ultra-Slim Bezel



## Optional module/ TV tuner



Slot Side

## Option Module

	<p><b>PC module</b></p> <ul style="list-style-type: none"> <li>- Model name: OMIA</li> <li>- ATOM platform</li> <li>- Basic Application</li> </ul>
	<p><b>PC module</b></p> <ul style="list-style-type: none"> <li>- Model name: OMIG</li> <li>- GM45 Platform</li> <li>- High Performance</li> </ul>
	<p><b>Digital signage module</b></p> <ul style="list-style-type: none"> <li>- Model name: OMD80</li> <li>- Standalone SD player</li> </ul>
	<p><b>Digital signage module</b></p> <ul style="list-style-type: none"> <li>- Model name: OMD100</li> <li>- Standalone HD player</li> </ul>
	<p><b>Digital signage module</b></p> <ul style="list-style-type: none"> <li>- Model name: OMD200</li> <li>- Flash Network player</li> </ul>
	<p><b>CAT5 extender module</b></p> <ul style="list-style-type: none"> <li>- Model name: OMCA</li> <li>- VGA in and CAT5 in/out/loop</li> </ul>

# Modular Smart Display

## Smart & narrow border design



### W42L100-OMA2

#### Smart built-in design

##### 1. Ambient Light sensor:

Modular Smart display provides a built-in light sensor which automatically adjusts the brightness according to the changes of ambient light. Display will decrease the brightness when the outside is dark, and increase the brightness when the outside is light. This brings best viewing experience to your application.



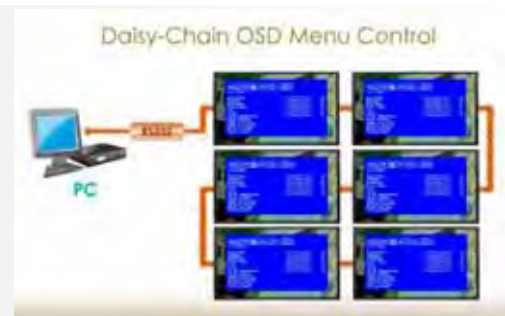
##### 2. Smart scheduling:

The smart display provides 7 programmable settings to control power and Video source with date and time



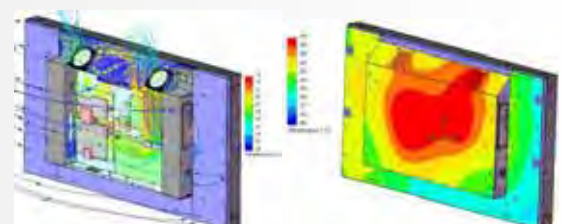
##### 3. Daisy-Chain OSD Menu Control :

The smart display also provides RS232 OSD control. With this tool, all settings of the OSD menu can be controlled via a remote PC. The optional daisy-chain function makes the RS232 remote control more powerful. Users can access more than one display that connect together via RS232.



##### 4. Smart thermal design:

The built-in temperature sensors and smart fan system provides the best overheating protection. With different ambient temperature, the thermal system will automatically control the fans. It helps reducing power consumption and noise, and make sure the system will work very stable.



# Modular Smart Display

## Smart & narrow border design



### W42L100-OMA2

#### Specifications

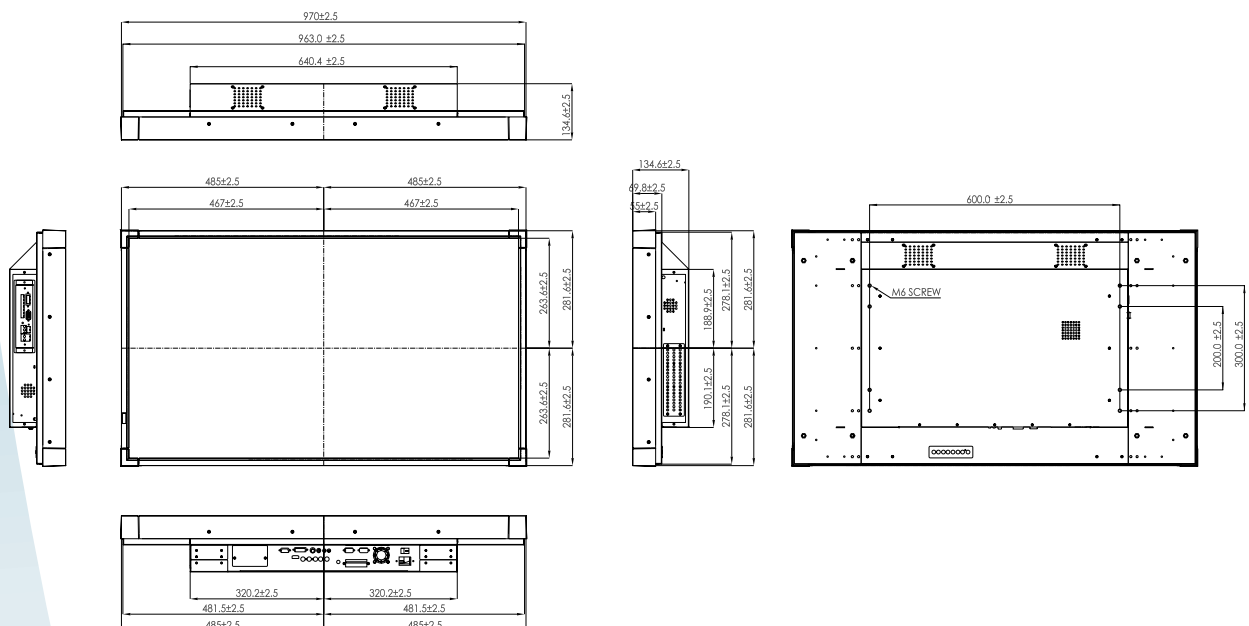
Model Name	W42L100-OMA2
Viewable Size Image	42"(16:9)
Active Display Area(mm)	930.25(H)x523.01(V)
Pixel Pitch(mm)	0.681
Number of Pixels	1366x768
Contrast Ratio	1500:1(typ.)
Display Color	16.7M(8bit/colors)
Brightness(cd/m <sup>2</sup> )	500
Viewing Angle(CR>=10)	-89~89(H); -89~89(V)
Synchronization Range_	31.5~60.0KHz/60~75Hz
Horizontal/Vertical	
Recommended Resolution	1366x768@ 60Hz
Plug & Play	VESA DDC 1/2B
Support Video Signal Type	NTSC/PAL
Optional Touch Screen	No(No possible to add)
Optional glass	Yes

#### Power management

Power Source	AC100~240V, Universal, 10%
Power Consumption	220 W typical, normal operation (Max. 280W with optional module)
Power Management	VESA DPMS Compliant

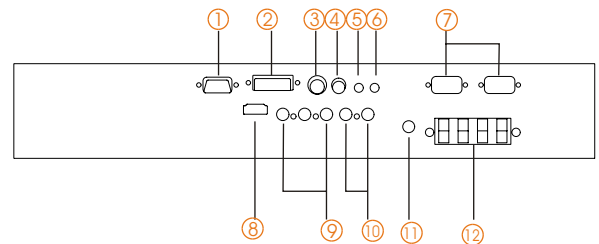
Remarks:W42L100 series= VGAInput only  
 W42L110series= VGA+Video Input  
 \*built in poweris default

#### Mechanical Drawing



#### IO connector

VGA Input	15 pin D-sub
Video Input	(optional)S-Video, Composite, component
DVI Input	(optional) yes
HDMI Input	by request
Audio Input	(optional)2x 3.5mm stereo phone jack (for PC/Video) ;1xL/R (RCA)
Audio Output	(optional)1x 3.5mm line out
Speaker Output	(optional)L/R push terminal
RS232 Remote control	(optional) 1 *D-sub9 (optional) 2 *D-sub9 with daisy-chain



- ① VGA Input
- ② DVI Input
- ③ S-video Input
- ④ CVBS Input
- ⑤ Audio Input (PC)
- ⑥ Audio Input (Video)
- ⑦ RS232 (Daisy chain)
- ⑧ HDMI Input
- ⑨ Component Input
- ⑩ Audio input L/R (RCA)
- ⑪ Line out
- ⑫ Speaker push terminal

\* Note: this is a simplified drawing and some components are not marked in detail.  
 Please contact our sales representative if you need further product information.

Rev.	Reasons	Revised Date
1.1	Change Spec	Apr-23-09
1.2	Change Spec	Apr-27-09
1.3	Change Spec	Apr-30-09